

Get the look.

Brick Fencing.



There's a reason why bricks are Australia's most loved building material. Not only are they beautiful, durable, and able to be used in a huge variety of home designs and styles - but they also work flawlessly both inside and out!

PGH Bricks and Pavers are thrilled to be the preferred brick supplier for The Block for another year. Read this fact sheet to get inspired and see how you can build your favourite looks from The Block using the versatile beauty of brick.

House 1. The Kew. Harry & Tash

Channelling everything Art Deco for the 1920s Spanish Mission house 'The Kew', this front garden fence used the Megalong Valley Grey bricks from our Dry Pressed Architectural Range.



 For more information on brick and styles click info

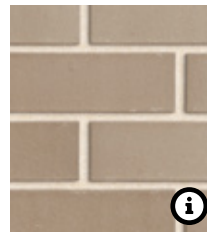
Featured Brick:

Megalong Valley Grey
Dry Pressed Architectural Range

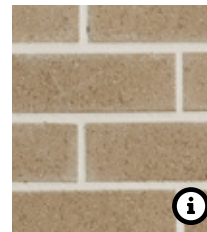


Get the look with these products:

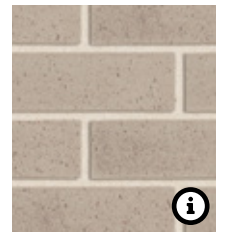
Mineral
Smooth



Emerald
Horizon



Warmed Stone
Pure Velvets



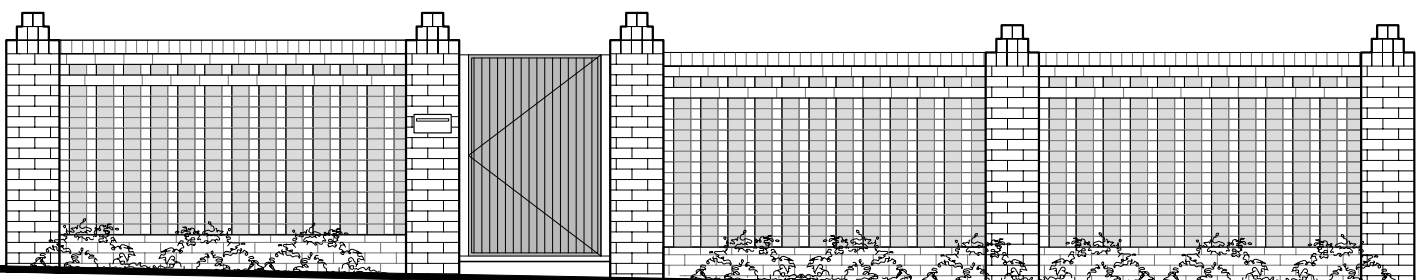
Bond patterns:

- Soldier Course
- Corbel Stack Bond
- Brickwork: Dog Tooth
- Brickwork: Stack Bond Piers

Mortar: Off White

Joint: Round / Ironed

Style: Fresh Naturals



House 2. The Reservoir.

Sarah & George



For the 1940s Inter-War style home 'The Reservoir', an intricate and detailed design pattern was created using a combination of bonds and colours to complement the interesting and unique aesthetic of the front facade.

i For more information on brick and styles click info

Featured Brick:

McGarvie Red

Dry Pressed Architectural Range



Organic White

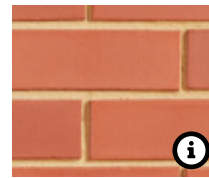
Dry Pressed Architectural Range



Get the look with these products:

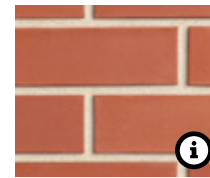
Adelaide Red

Smooth



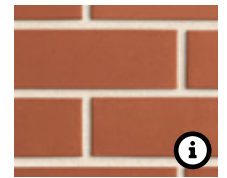
Red

Smooth



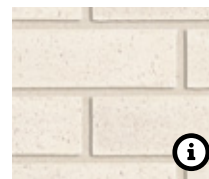
Rojo

Morada



Crinkle White

Pure Velvets



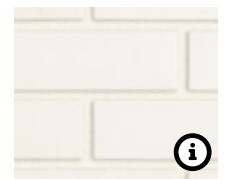
Crevole

Velour



Blanco

Morada



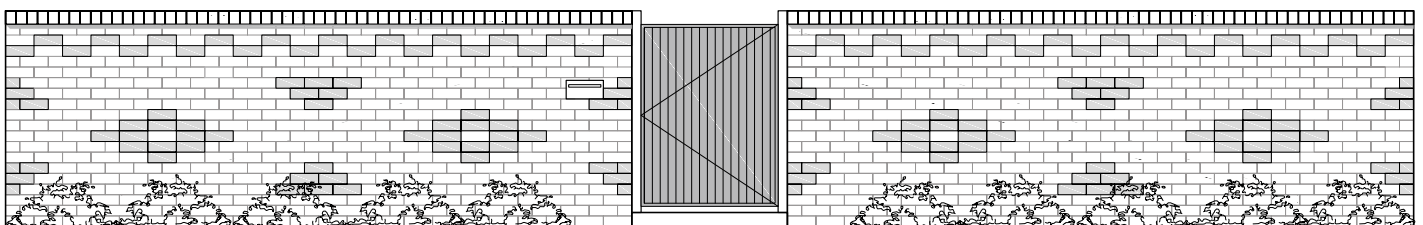
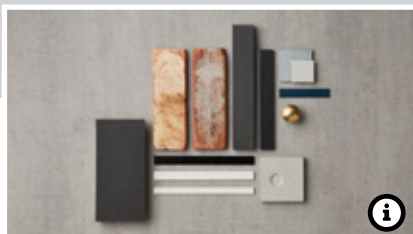
Bond patterns:

- Soldier Course Headers
- Stretcher Bond
- Contrasting Colour Brick Feature

Mortar: Off White

Joint: Round / Ironed

Style: Industrial Chic



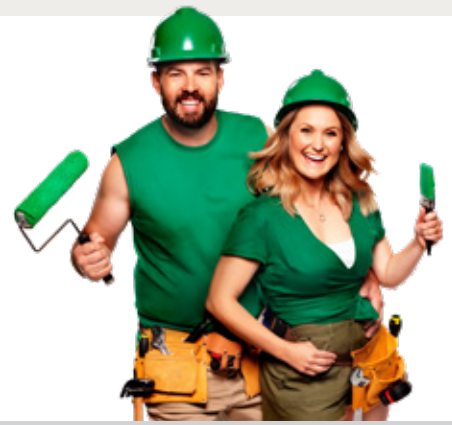
To seek further information on bricks featured, visit us at pghbricks.com.au/theblock.
For design inspiration from The Block and beyond, don't forget to follow us on our socials!



House 3. The Mayfield.

Daniel & Jade

For the front garden of the 1930s Californian Bungalow 'The Mayfield', Daniel and Jade's house used the Balmerino Blend and Gledswood Blend from our Dry Pressed Architectural brick range for the brick fence.



i For more information on brick and styles click info

Featured Brick:

Gledswood Blend

Dry Pressed Architectural Range



Balmerino Blend

Dry Pressed Architectural Range



Get the look with these products:

Nickel Flash

Metallic



Eaglemont

Distinctively Melbourne



Mystique

Origin



Black Ash

Urban Essence



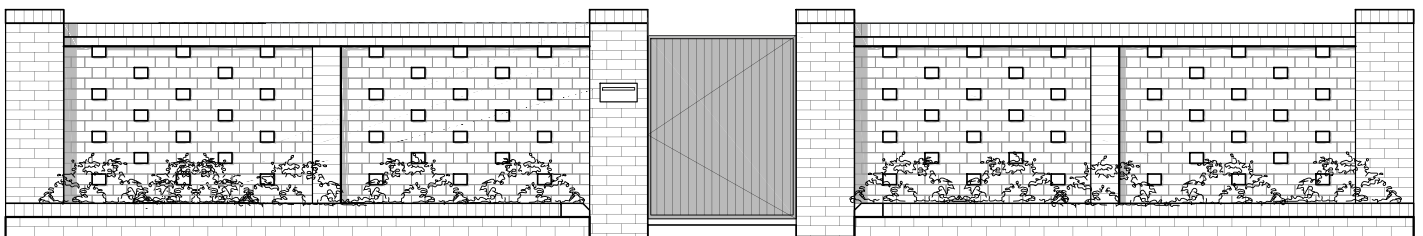
Bond patterns:

- Soldier Course Headers
- Capping Bricks - Bullnose
- Flemish Bond with Protruding Bricks

Mortar: Off White

Joint: Round / Ironed

Style: Dark & Stormy

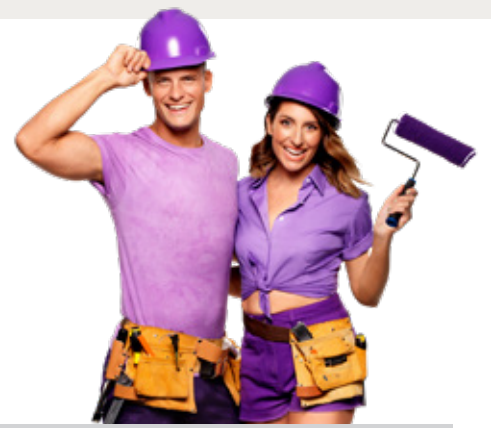


To seek further information on bricks featured, visit us at pghbricks.com.au/theblock.
For design inspiration from The Block and beyond, don't forget to follow us on our socials!



House 4. The Summerhill. Luke & Jasmin

With the task of upholding the traditional Australian Federation style of the 1910s in the 'Summerhill' home, brick was a clear winner and wise decision to use in the front garden fence.



i For more information on brick and styles click info

Featured Brick:

Black Beauty

Dry Pressed Architectural Range



Hawkesbury Bronze

Dry Pressed Architectural Range



Get the look with these products:

Nero
Morada



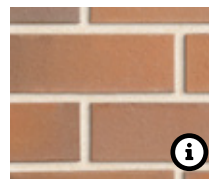
Bark
Character



Thunder
Dark & Stormy



Garnet
Opaline



Copper Glow
Smooth



Black and Tan
Smooth



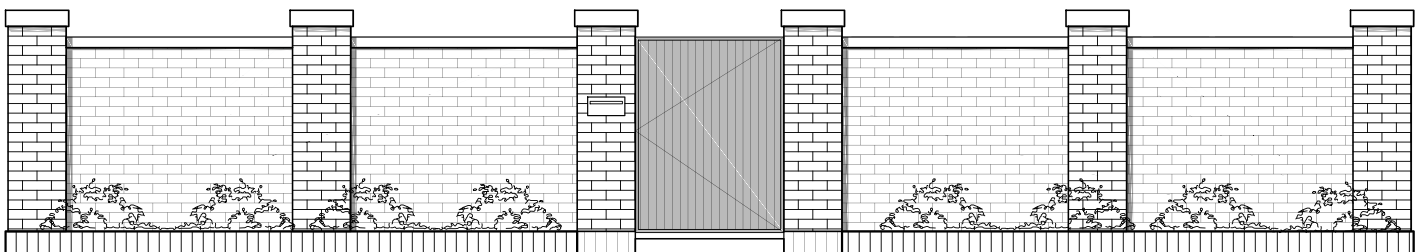
Bond patterns:

Stretcher Bond - Walls & Piers

Mortar: Off White

Joint: Round / Ironed

Style: Warm Earth



To seek further information on bricks featured, visit us at pghbricks.com.au/theblock.
For design inspiration from The Block and beyond, don't forget to follow us on our socials!



House 5. The Junction. Jimmy & Tam

For the 1950's Mid-Century Modern build 'The Junction', the statement Organic White bricks from our Dry Pressed Architectural range were chosen for their fresh, creamy and perfectly on-brief front garden fence.



i For more information on brick and styles click info

Featured Brick:

Organic White
Dry Pressed Architectural Range

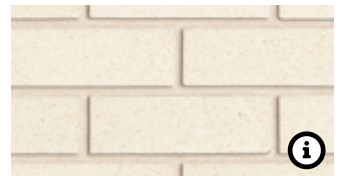


Get the look with these products:

Crinkled White
Pure Velvets



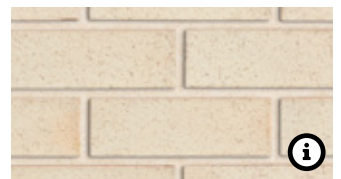
Crevole
Velour



Blanco
Morada



Frost
Naturals



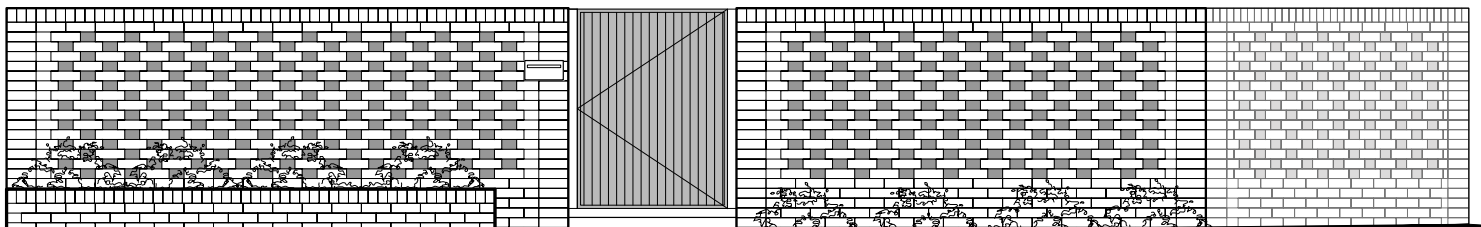
Bond patterns:

- Soldier Course Headers
- Stack Bond
- Solid Brick Wall to Rear Leaf & Hit and Miss Brickwork

Mortar: Off White

Joint: Round / Ironed

Style: Sophisticated Neutrals



To seek further information on bricks featured, visit us at pghbricks.com.au/theblock.
For design inspiration from The Block and beyond, don't forget to follow us on our socials!

